

# TECH PORT SAN ANTONIO

AN INITIATIVE OF PORT  SAN ANTONIO

CONNECTED WORLD  
CONNECTED SOLUTIONS



Tech Port is Port San Antonio's vision to strategically grow one of the world's leading destinations for innovative technologies.

Our vision is to:

- **CONNECT PEOPLE TO OPPORTUNITIES;**
- **CONNECT EMPLOYERS TO EDUCATORS; AND**
- **CONNECT INNOVATORS WITH BUYERS ACROSS THE NATION AND AROUND THE WORLD.**

Today we are home to over 80 employers and 18,000 talented people who are developing new technologies in the world's most advanced fields:

**AEROSPACE | DEFENSE | CYBERSECURITY | ROBOTICS | APPLIED TECHNOLOGY  
ADVANCED MANUFACTURING | SPACE TECHNOLOGY | GLOBAL LOGISTICS**

**SINCE LAUNCHING THIS VISION IN 2018, WE'VE CREATED OVER 8,000 NEW JOBS.**



Plus One Robotics R&D laboratory.



Alamo Regional Security Operations Center (ARSOC) strengthens around-the-clock collaboration between the city of San Antonio and CPS Energy information security personnel to safeguard the community's critical infrastructure against a growing threat environment.

# GROWING A HOME FOR INNOVATION

To expand our *Tech Port* vision, we've launched a comprehensive innovation center that will have a transformative impact across the community. The facility significantly accelerates and grows the reach of tech opportunities on our campus and beyond. It bolsters innovation by promoting connections and collaborations between industries, researchers, educators and other stakeholders across the nation and around the world. And it is the front door that inspires and prepares the next generation of San Antonio's innovators.

**A PLACE FOR GATHERING** - The center is a dynamic resource accessible to students, families, educators, startups and seasoned tech professionals alike. A central common area, featuring a LAN gaming space and a food hall allow an array of visitors and users to engage and interact in their shared interest in learning about and participating in technologies that are evolving and showcased throughout the center.

**TECH COLLABORATION LAB** – This large space equipped with state-of-the-art prototyping tools and IT infrastructure which includes operations by renowned accelerator Capital Factory, allow technology firms, researchers and academia to work side-by-side and develop the next generation of innovations. The space can be configured for users ranging from startups to large tech firms and partnering universities.



Above: The technology / esports arena at the Boeing Center at Tech Port.

**TECHNOLOGY ARENA & CONFERENCE CENTER** – This large capacity arena is like no other in the region—equipped with A/V and LAN technology and highly configurable. The multi-use facility can host electronic gaming, robotics, cybersecurity and drone tournaments and also supports technology demonstrations, conferences, training activities, trade shows, and live entertainment.

**TECHNOLOGY MUSEUM & INDUSTRY SHOWROOM** – The center provides the San Antonio Museum of Science and Technology (SAMSAT) a platform to expand its work connecting young people to futures

in advanced technologies through unique exhibits and innovative STEM programs. A large portion of this public space will showcase new technologies developed at the Port and throughout San Antonio—serving as a showroom that presents those innovations to potential buyers.

## CLASSROOMS AND MEETING ROOMS

– Throughout the center, spaces of different sizes can accommodate group meetings and activities promoting learning and collaboration.

Below: Cybersecurity Operations Center simulation at San Antonio Museum of Science and Technology.



# TRANSFORMING OUR REGION'S ECONOMY

**AEROSPACE** **Boeing**, whose largest sustainment operation is located at the Port, is doubling its workforce. New projects include the Navy's F/A-18 Superhornet fleet and construction of the new Air Force One. **StandardAero**, operating in highly specialized workshops and R&D spaces, serves a growing defense and commercial clientele. And **Knight Aerospace**, which creates specialized systems that convert cargo aircraft interiors, including as flying emergency rooms, is headquartered at the Port.



**CYBERSECURITY** Leading names **CACI**, **IPSecure**, **CNF Technologies**, **Northrop Grumman**, **Booz Allen Hamilton**, **GOVCIO**, **Leidos** and **Technica** have based or grown major cyber labs on the Port campus in the past five years to support military and commercial clients. In 2021, the City of San Antonio and CPS Energy launched the **Alamo Regional Security Operation Center (ARSOC)** on the Port campus—the nation's first integrated facility for municipal critical infrastructure cybersecurity. And in early 2022 the **Cybersecurity Manufacturing Innovation Institute (CyManII)** launched a new facility to train workers in securing manufacturing and supply-chain operations across the nation against cyberattacks.

**APPLIED TECHNOLOGY** **Plus One Robotics** is pursuing global opportunities from its Port headquarters by outfitting industrial robots with sensors, AI and cyber technology. The firm's innovations are disrupting global sectors, including supply-chains, manufacturing, aerospace, facilities management and others. Netherlands-based **XYREC** maintain its North American headquarters on the Port campus, where the world's largest industrial robot is revolutionizing global aircraft maintenance.



**EDUCATION** Established customer **IPSecure** provides an array of training and certification offerings for IT, cybersecurity and other professionals.

The **San Antonio Museum of Science and Technology (SAMSAT)** expanded its collaboration with **NASA-funded WEX Foundation** and an array of area schools and universities—delivering innovative STEM-based programs to over 120,000 students since 2018. The museum is also a central gathering platform and connector for cybersecurity, robotics and other industry professionals through programs and events. Additionally, in 2020 **Compass Rose**, a public charter school, launched a new K-12 campus at the Port with a focus on STEAM-based curricula.

## UPCOMING STATE-OF-THE ART FACILITIES

### VERTIPORT FOR EVTOL OPERATIONS



### TOWER OFFICE SPACE



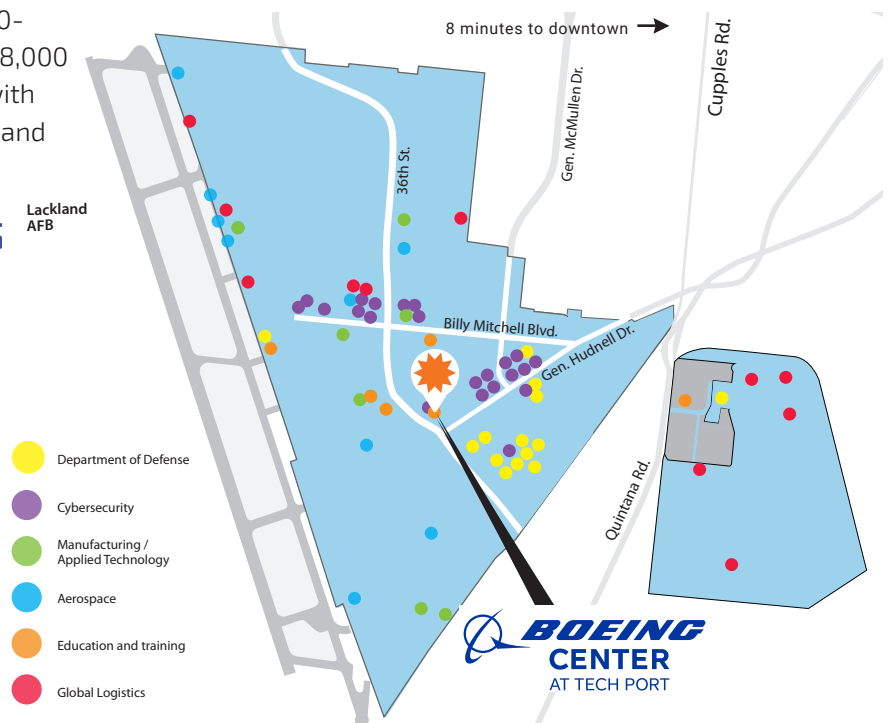
Learn more at [PortSanAntonio.us/Vision-22](https://PortSanAntonio.us/Vision-22)

# A PLACE TO INNOVATE AND CONNECT

Located just southwest of downtown, our 1,900-acre campus is where leading employers and 18,000 professionals operate, innovate and connect with opportunities in the region, across the country and around the world.

## A UNIQUE TECHNOLOGY CAMPUS

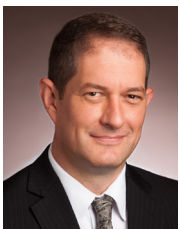
- Direct access by air, train and highway
- Near region's key industry sectors: defense / intelligence, cybersecurity, biomed, energy, manufacturing and financial services
- Secure offices
- Large industrial manufacturing / prototyping facilities
- Hangars and aircraft maintenance workshops
- Build-to-suit sites from 5 to 150 acres



## OUR CUSTOMERS INCLUDE:



## CONNECT WITH US: WWW.TECHPORTSA.COM



Jim Perschbach  
President & CEO  
(210) 362-7812  
jim.perschbach@  
portsanantonio.us



Adrienne Cox, RPA  
Chief Operating Officer  
(210) 362-7867  
adrienne.cox@  
portsanantonio.us



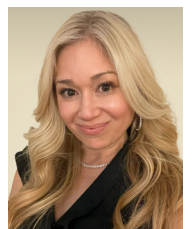
Will Garrett  
VP Talent & Technology  
Development &  
Integration  
(210) 362-7856  
will.garrett@  
portsanantonio.us



Marcel Johnson  
Sr. VP Talent &  
Technology Scouting  
& Identification  
(210) 362-7830  
marcel.johnson@  
portsanantonio.us



Curtis Casey  
VP Strategic Design  
Development &  
Portfolio Management  
(210) 362-7853  
curtis.casey@  
portsanantonio.us



Stephanie Garcia  
Business Development  
Specialist  
(210) 362-7888  
Stephanie.garcia@  
portsanantonio.us