



333 Morris Witt
 San Antonio, TX 78226
 (210) 339-2800
www.kellydistributioncenter.com
 ISO 9001:2008 & AS9120A certified

Whatever your business, it's in safe hands with us.



Automotive



Construction

Museums/
Art



Aerospace/Advanced
Manufacturing



Energy



Office
Equipment

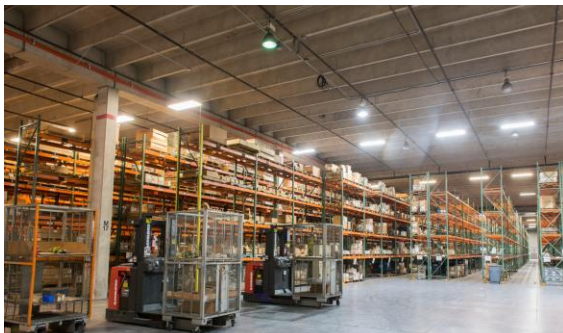


Wholesale/
Retail

AECOM - Kelly Distribution Center (KDC) is a logistics provider offering customized storage and transportation services to businesses that require one-time or long-term comprehensive warehousing and logistics support.

KDC has more than 20 years of experience in the region. The company operates within a 400,000-square-foot Class A secure warehouse facility. Spaces range from a few hundred feet to more than 50,000 square feet of contiguous space. Industries served include aerospace, construction, automotive, energy, medical, manufacturing, museums/art, retail/wholesale and equipment leasing, among many more.

The secure facility features alarm and camera monitoring systems and full sprinkling of storage areas. The building has two concrete entry ramps, a composition-over-concrete roof and office space options. KDC also offers a Warehouse Management System. The company's wide range of clients range from small local operators to multi-national firms entering and growing in the South Texas market.



Spaces in KDC's secure warehouse range from a few hundred feet to more than 50,000 square feet of contiguous space.

SERVICES INCLUDE

- Storage
- Transload
- Cross-docking
- Packaging
- Warehousing
- Regional pick-up/delivery
- Container assembly
- Kitting



Loading and unloading that keeps items safe from the elements.



KDC has equipment available and ready to support customers, including a heavy-duty crane used to hoist components such as jet engines.

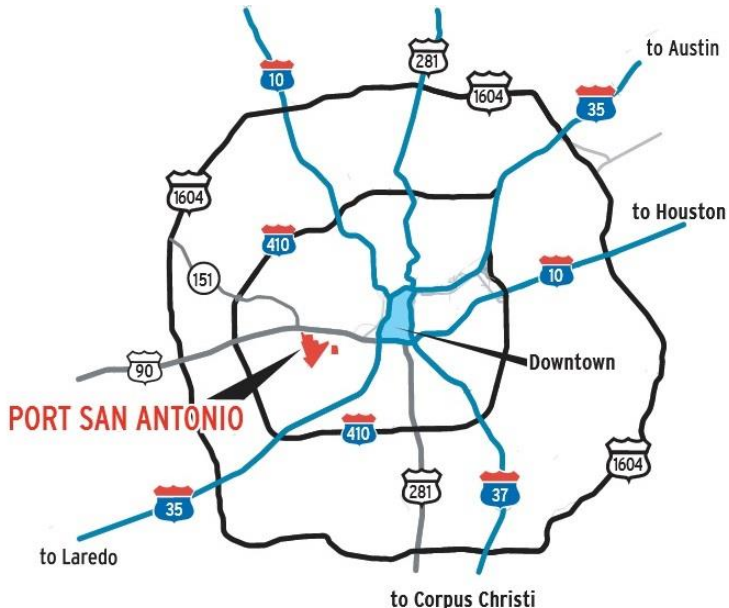
THE PORT SAN ANTONIO ADVANTAGE

KDC's customers at Port San Antonio can access the large platform's strategic location and other logistics assets.

AIR/RAIL LOGISTICS

Port San Antonio features an industrial airport (Kelly Field, SKF), railport (East Kelly Railport) with direct switching from Union Pacific's South San Yard and access to two class-1 railroads (BNSF Railway and Union Pacific) and a variety of industrial spaces within a foreign-trade zone (FTZ #80-10).

Rail switching services are provided by The Watco Companies. San Antonio's strategic location near the center of North America is harnessed by Port San Antonio's air, road and rail logistics assets and access to Texas seaports, including Houston and Corpus Christi within three hour drives.



By road:

- 5 miles to downtown
- 30 minutes to the Eagle Ford Shale
- 2 hours to both Laredo and Corpus Christi
- 3 hours to Houston

THE PORT IS FULLY CONTAINED WITHIN A FOREIGN-TRADE ZONE (FTZ #80-10). THIS OPTION CAN BE ACTIVATED BY KDC CUSTOMERS.

FTZ Advantages

- Duty Deferral: Duty payments are due once the goods leave the FTZ and enter the U.S. market.
- Duty Elimination: Import duties can be avoided if goods entering the FTZ are stored, sorted and otherwise handled within the FTZ before being exported without entering the U.S. marketplace.
- Duty Reduction: Because duties are not charged while imported components remain in the FTZ, products can be assembled inside the FTZ before leaving the zone as finished goods.
- Waste Duty Elimination: Duties are not imposed on waste products.
- Weekly Entry: Goods entering through an FTZ can be consolidated into a single weekly charge.
- Inventory Tax Elimination: Goods imported into an FTZ are exempt from local personal property taxes while in the FTZ.

U.S. CUSTOMS

An on-site Federal Inspection Services (FIS) facility at Kelly Field can promptly inspect foreign shipments.

The U.S. Customs and Border Protection Agency is the primary authority for assessing and collecting duties, taxes and fees on imported goods. The FIS facility is manned by a U.S. Customs and Agricultural Inspector.

Hours are 8am to 5pm. Off hours service can be scheduled. The facility is closed on federal holidays. Call 210-362-7838 for more information.