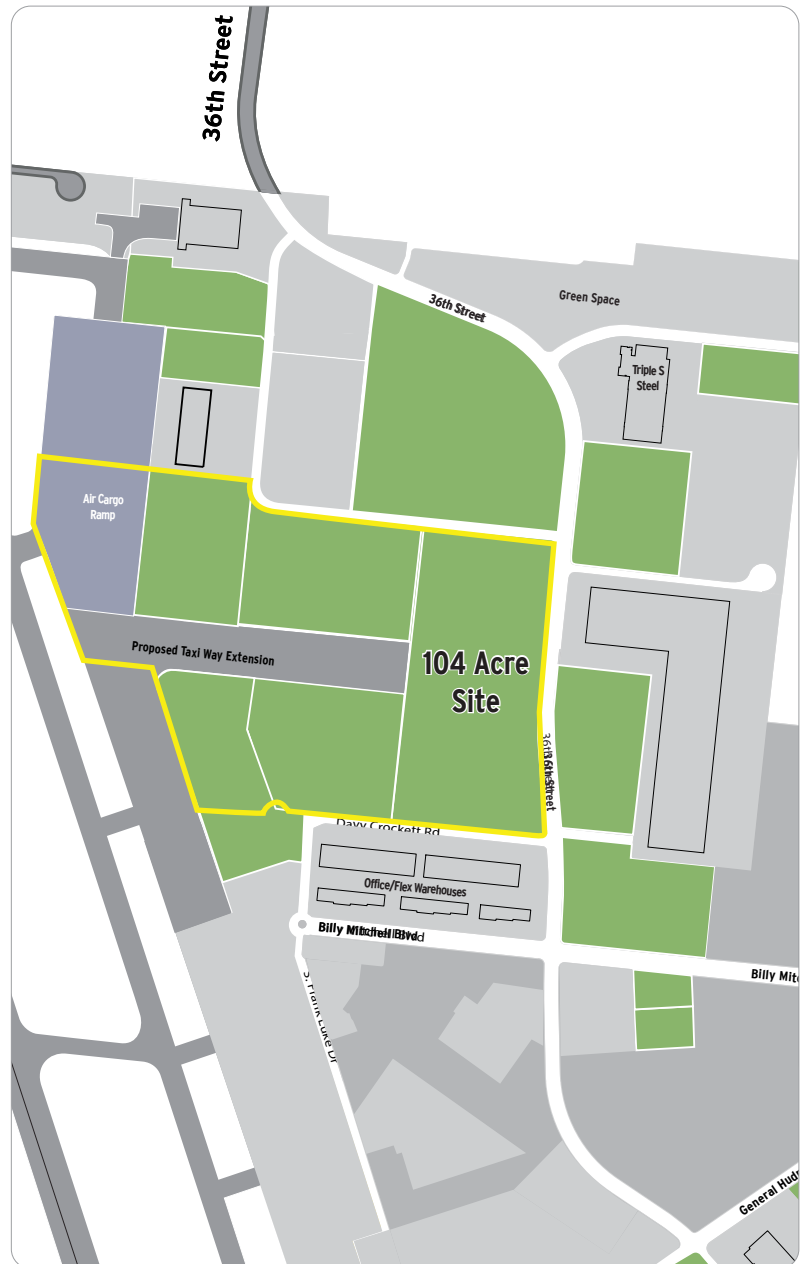




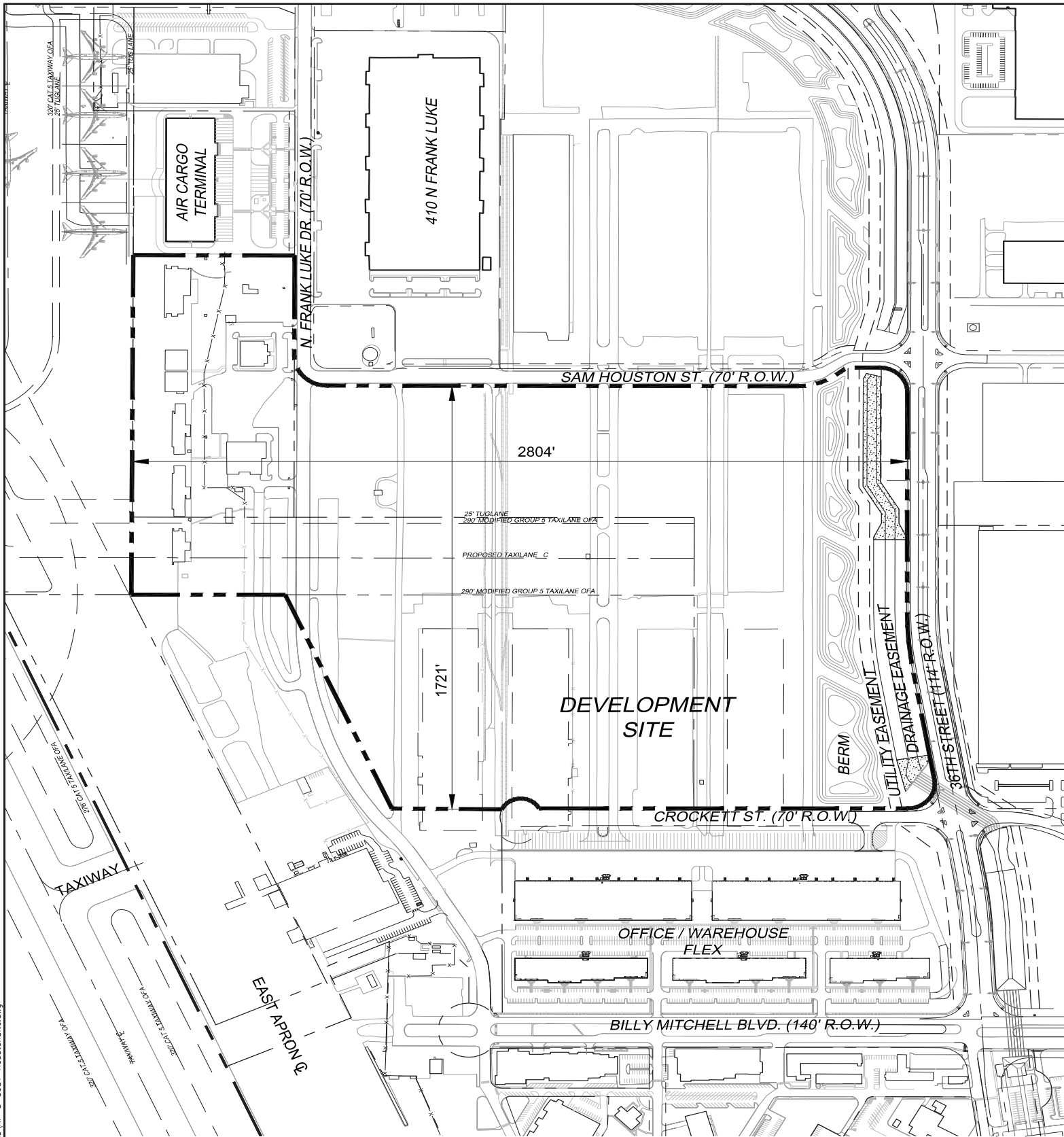
# Up to 104 ACRES- Airfield Access 36th St at Sam Houston and Crockett Rd. Kelly Field North - San Antonio, TX

1,900 acre mixed use Master Planned Development  
Ideal for Aviation Manufacturing/Repair/Overhaul  
Mixed Industrial with special use zoning, Subdividable  
Foreign-Trade Zone  
US Customs Federal Inspection Station  
Airfield ramp access location with nearby FBO  
Direct access to IH-35, IH-10, IH-37 and U.S. Hwy 90  
Build-to-suit or long-term Ground Lease available  
Next to Kelly Field (SKF)–11,500 ft. runway  
Near Boeing, StandardAero, Chromalloy, Knight  
Aerospace, GoAeroMX



## FOR LEASE CONTACT INFO:

Curtis Casey, Director of Finance and Asset Management  
(210) 362-7853  
[Curtis.Casey@PortSanAntonio.us](mailto:Curtis.Casey@PortSanAntonio.us)



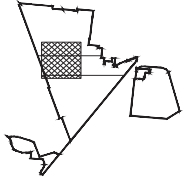
**104.04 ACRES**  
**36TH ST. @ CROCKETT ST. SITE**



907 BILLY MITCHELL BOULEVARD  
 SAN ANTONIO, TX. 78226. 210.362.7800



14 AUG 12

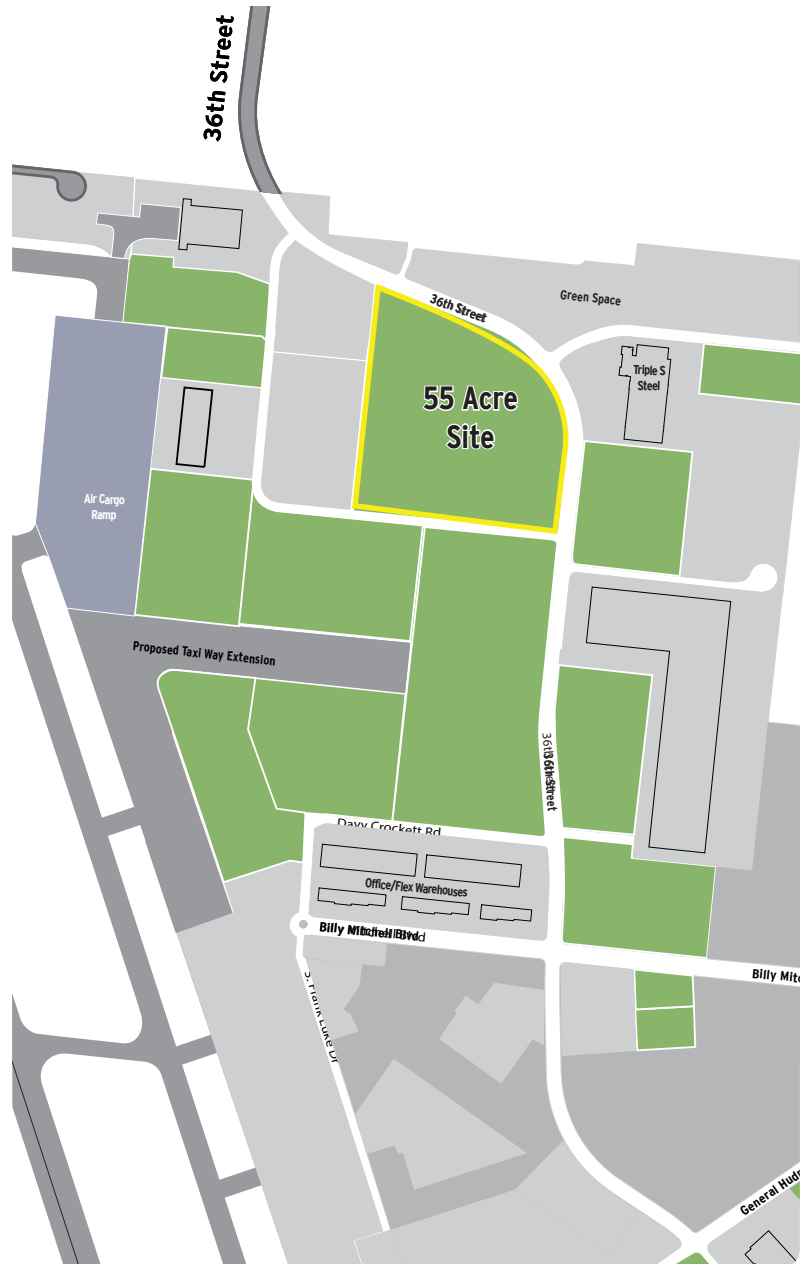


**KEYMAP:**



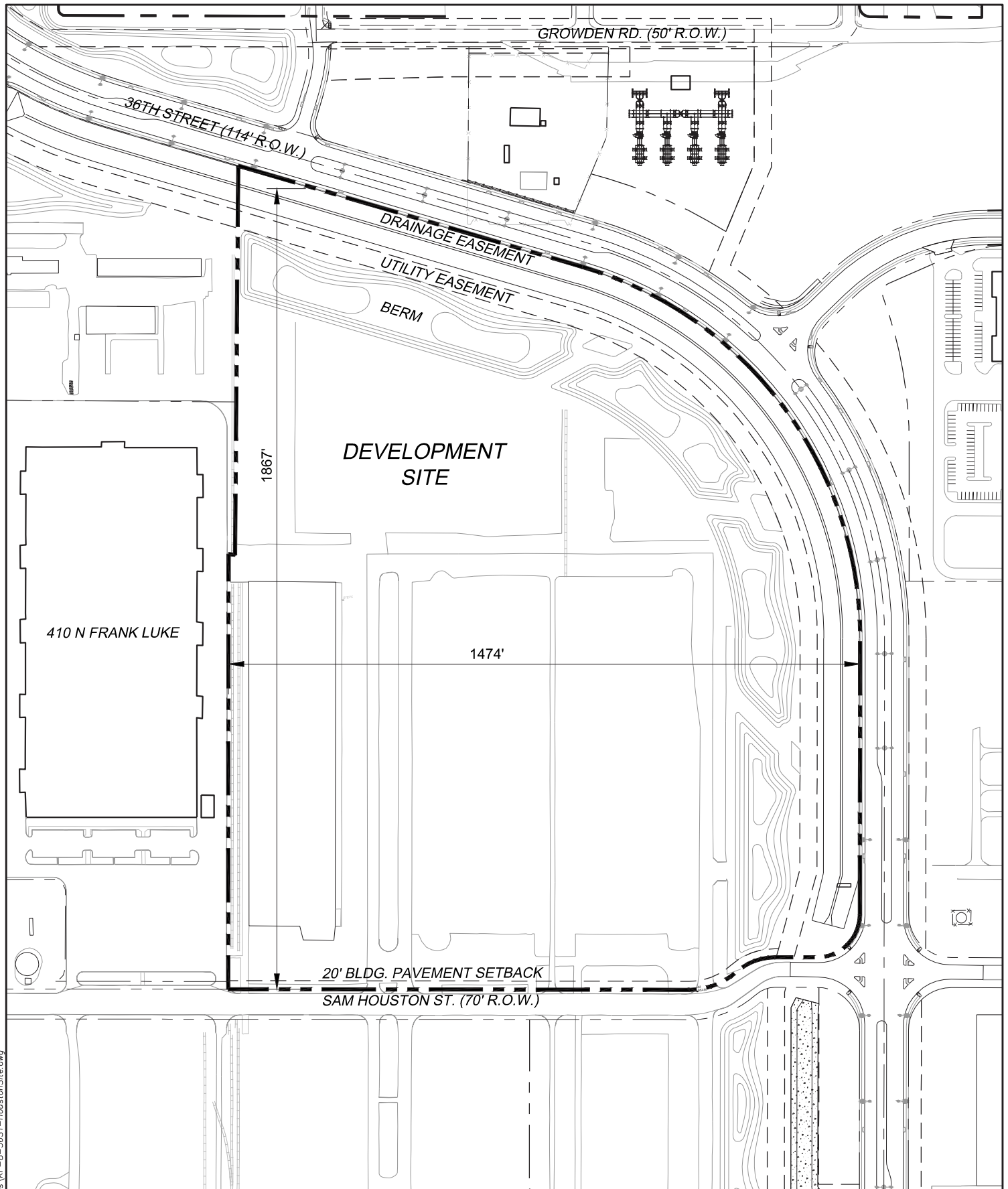
# Up to 55 ACRES- Airfield Access 36th St at Sam Houston and Crockett Rd. Kelly Field North - San Antonio, TX

1,900 acre mixed use Master Planned Development  
Ideal for Aviation Manufacturing/Repair/Overhaul  
Mixed Industrial with special use zoning, Subdividable  
Foreign-Trade Zone  
US Customs Federal Inspection Station  
Airfield ramp access location with nearby FBO  
Direct access to IH-35, IH-10, IH-37 and U.S. Hwy 90  
Build-to-suit or long-term Ground Lease available  
Next to Kelly Field (SKF)–11,500 ft. runway  
Near Boeing, StandardAero, Chromalloy, Knight  
Aerospace, GoAeroMX



## FOR LEASE CONTACT INFO:

Curtis Casey, Director of Finance and Asset Management  
(210) 362-7853  
[Curtis.Casey@PortSanAntonio.us](mailto:Curtis.Casey@PortSanAntonio.us)



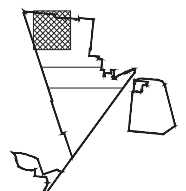
**54.97 ACRES**  
**36TH ST. @ SAM HOUSTON SITE**



907 BILLY MITCHELL BOULEVARD  
SAN ANTONIO, TX. 78226. 210.362.7800



14 AUG 12



**KEYMAP:**